

pelican
platinum
2 Piece 

Platinum 2 Piece For when life just clicks



an eakin company 



Introduction to Platinum 2 Piece

Why choose 2 Piece?

Your patients shouldn't have to fit their lifestyle around their pouch. That's why we developed the Platinum 2 Piece for ultimate ease of use, flexibility, security and comfort - so your patients can live as they choose.

Who could benefit from 2 Piece?

- Those who lead a busy lifestyle
- Have a demanding job
- Have limited vision or dexterity
- Are carers
- Or suffer from dementia

Three effortless steps

POP IT

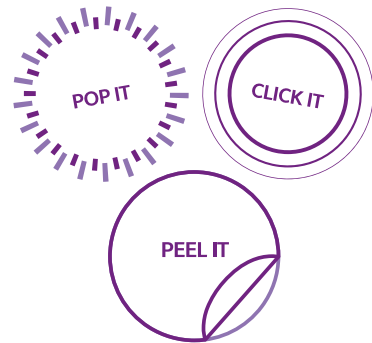
For quick and easy pouch changes

CLICK IT

The click gives your patients confidence that their bag is secure against leaks

PEEL IT

Unique peel down action for greater control over pouch changes



“The adhesive was excellent. It’s the only adhesive that’s soft, comfortable and doesn’t wrinkle around the edges.”

- Platinum 2 Piece user

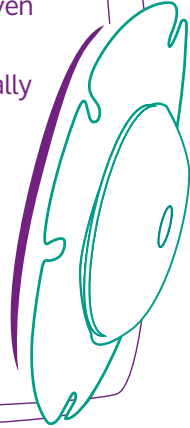




The Flange

Ideal for every lifestyle

- The 6 contours and foam-backed flange provides greater comfort and conforms to every shape – even over hernias
- Purple guiding ring helps with application, especially for those with limited dexterity or vision
- Specially designed longer wear-time adhesive
- Sticks instantly
- Available in 60mm and 80mm ring size
- Large thumb tab for ease of use
- Available in Flat or Soft Convex



Added Security

- Secure coupling, sealed with an audible 'Click' giving complete confidence that the pouch is secure

Greater Speed and Ease

- 'Pop-up' flange relieves downward pressure on the abdomen and allows for a much quicker and easier pouch change

Flexibility and Comfort

- 6-fluted flange adapts to any body shape and is particularly useful over hernias

**"The pouch is easy to apply onto the ring/
baseplate...the pop-up is genius."**

- Platinum 2 Piece Soft Convex user



2 Piece Flat

Why choose flat?

Perfect for those with a protruding stoma that does not require additional support, maximising wear-time without the fear of leakages.

The Platinum 2 Piece flange not only sticks instantly, providing greater security for the user, the adhesive also allows longer wear-time.

The 6 contour, foam backed flange provides the user with increased comfort and flexibility.

Available in Closed or Drainable.



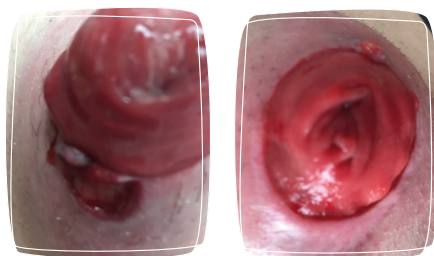
Users rate their
Platinum 2 Piece

95% COMFORT
90% COUPLING SECURITY
86% DISCRETION
Excellent or Good



Case Study

Helen Coulter, RGN N.Ireland



67-year-old male, with a Hartmanns Colostomy since 2018 due to bowel cancer. He is very active, lives alone and manages his stoma independently.

Patient developed a parastomal ulcer, though clean with no slough present, it was bleeding easily and was painful to touch.

He wore a firm convex pouch and support garment which was felt had caused the pressure ulcer to develop.

The ulcer was treated with AQUACEL Ag and DuoDERM. The patient was changed onto Platinum 2 Piece flat flange to reduce the peristomal pressure. After 2 days the ulcer appeared smaller whilst the pain and bleeding had lessened. The ulcer has now completely healed with the peristomal skin healthy and intact. He changes the flange every 3 days and finds the Platinum 2 Piece **"easy to use"** and is able to stoop **"without it being noticeable/uncomfortable and digging in."**





2 Piece Soft Convex

Why choose Soft Convex?

Does your patient experience leakages?
 Are they struggling to keep the appliance in situ for more than a few hours?
 Have irregular stoma planes or is the stoma flush or retracted? Then Platinum 2 Piece Soft Convex is for them.



Designed for those with a relatively flush or retracted stoma, that requires enhanced stomal protrusion. The flange sticks instantly and more securely to the skin, while offering greater wear-time, even on the more challenging stomas. Applying gentle support with no ulcer-causing pressure points.

Available in Closed or Drainable.



Users rate their
**Platinum 2 Piece
 Soft Convex**

100% FLEXIBLE
84% COMFORT
85% SECURITY
 Excellent or Good

Meet Kjeld



I'm 71 and an active gardener. I've had my colostomy since 2015 following rectal cancer. My stoma is retracted so I use an adhesive 2 Piece convex product.

Leakages and skin problems

I change every day but get leaks and skin problems up to twice a month. The convex feels rigid and sometimes leaves marks on my skin. I've also had significant issues with residue from the flange.

2 Piece Soft Convex success

I've worn it for up to 3 days with no leaks. The flange sticks fast, is super comfortable, skin friendly and easy to attach and change. It leaves no adhesive residue.





Meet Kaj



I'm 61 and a car enthusiast. I got my ileostomy in 1978 due to Ulcerative Colitis. I used the same 2 Piece flat system until 2012.

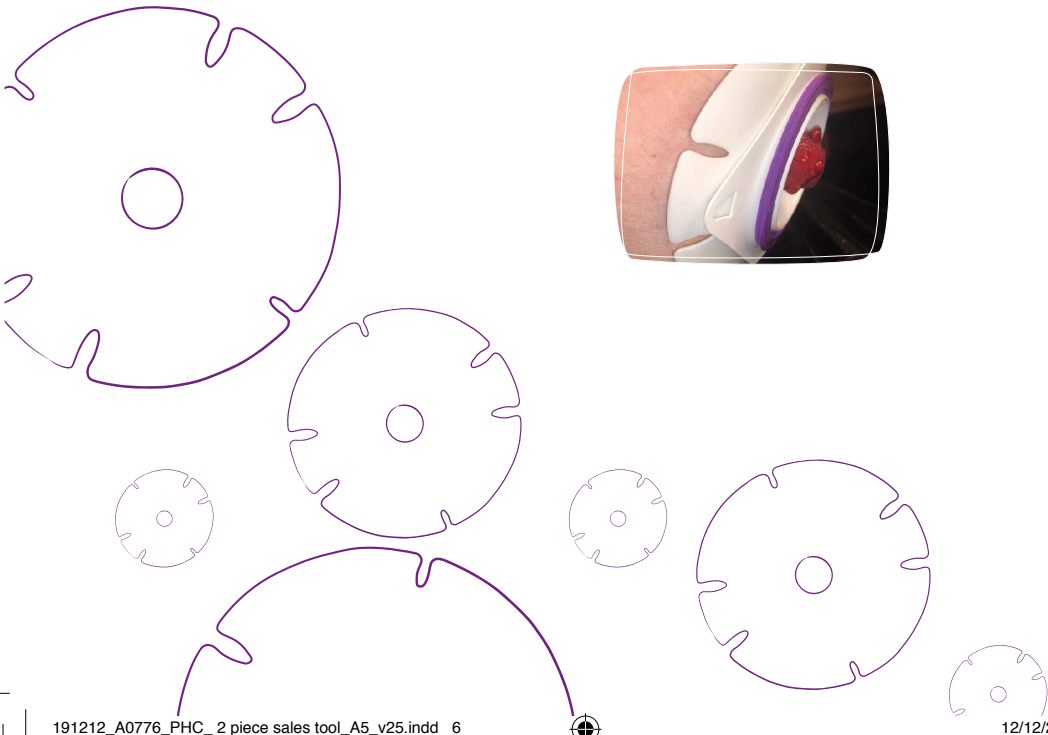
Stoma care became challenging

I got a new ileostomy in 2012 following Crohn's disease and moved to a convex option. My new stoma often retracts to skin level, I have periodic leaks, a hernia and the consistency of my output varies.

Success after trying 2 Piece Soft Convex

I've used the same brand for 40 years. After trying Platinum 2 Piece I've totally changed my mind! I've even worn it up to 7 days with no leaks or skin problems. It feels softer and more comfortable to wear, it really sticks well and moulds to my hernia.

“After 40 years on a different brand I'm changing to Platinum 2 Piece”





Platinum 2 Piece

Closed Pouches			Pack of 30
Ring Size	Mini	Std	Maxi
60mm	607215	607415	607615
80mm	-	807415	807615

Drainable Pouches			Pack of 10
Ring Size	Mini	Std	Maxi
60mm	618215	618415	618615
80mm	-	818415	818615

Flat Base Plates		Pack of 5
Ring Size	Stoma Size	Product Code
60mm	CTF 15-40mm	600015
	20mm	600020
	22.5mm	600022
	25mm	600025
	27.5mm	600027
	30mm	600030
	32.5mm	600032
	35mm	600035
80mm	37.5mm	600037
	40mm	800040
	45mm	800045
	50mm	800050
	CTF 15-60mm	800015

Soft Convex Base Plates		Pack of 5
Ring Size	Stoma Size	Product Code
60mm	CTF 15-40mm	600015C
	20mm	600020C
	22.5mm	600025C
	25mm	600030C
	27.5mm	600035C
	30mm	600040C
80mm	CTF 15-60mm	800015C



pelican
platinum
2 Piece 



Help life click for your patients

*Data on file

To order samples or find out more,
contact your local representative or call **0800 318 282**

pelicanhealthcare.co.uk


Providing NHS services



an eakin company 