

Instructions for use

Pelican
ModaVi 

pelican
HEALTHCARE

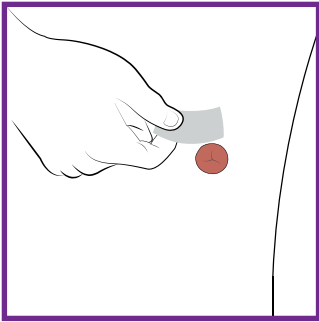
About this product

The enclosed Pelican ModaVi 2-piece pouches are used to collect output from a stoma. The baseplate component is intended to adhere to intact peristomal skin. Individual wear times may vary.

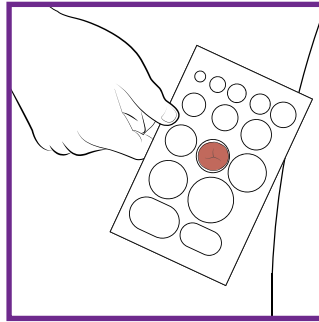
A convex option may be suitable for retracted, flush or other challenging stomas only after assessment from a stoma care professional.

1. Preparation	4
2. Application	5
3. Using the Window	7
4. Fitting the Filter Cover	8
5. Reducing Pouch Size	9
6. Emptying via the Outlet	10
To Close the Outlet	11
7. Removal	12
8. Disposal	13

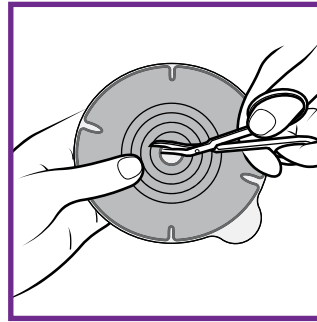
1. Preparation



1a. Ensure skin is clean and dry before application. Clean as advised by your healthcare professional.

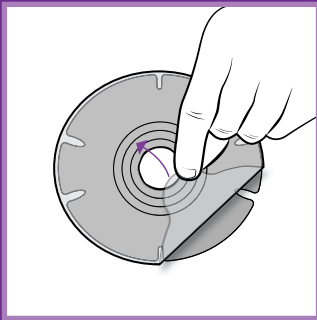


1b. If the pouch is pre-cut, please proceed to step (2). If the pouch needs to be cut to size, use the enclosed measuring guide to measure the size and shape of the stoma.

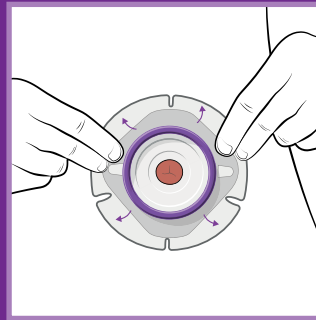


1c. Using the cutting guide on the baseplate, cut a hole to fit the exact pre-measured size and shape of the stoma using curved scissors, taking care not to cut through the pouch film on the other side. An accurate fit reduces the risk of leaks and skin problems.

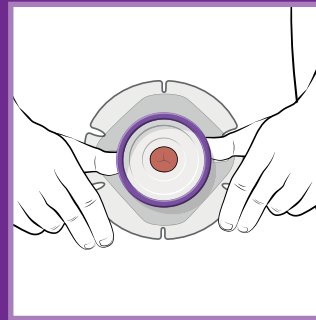
2. Application



2a. Peel off the protective film from the baseplate.

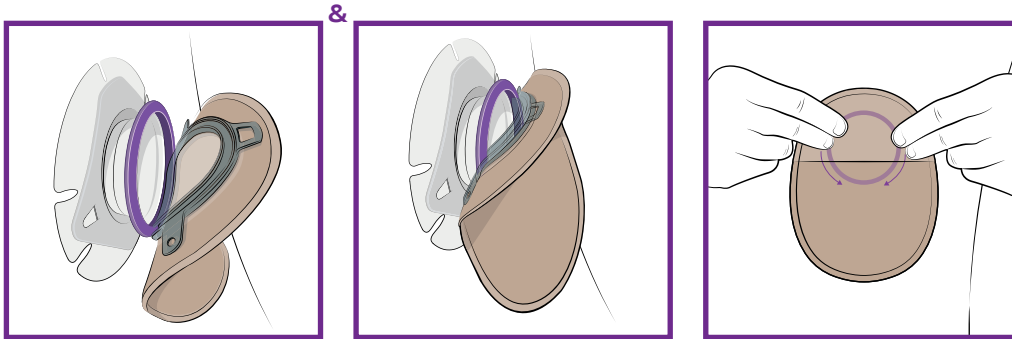


2b. Align the centre hole of the baseplate around the stoma. Starting at the bottom of the baseplate press gently against your skin, smoothing upwards and outwards to ensure the entire baseplate is securely adhered to the skin.



2c. Extend pop-up on baseplate.

2. Application



2d. To attach the pouch, align the pouch with the purple ring and click together. You will hear an audible click. Begin at the bottom and work upwards.

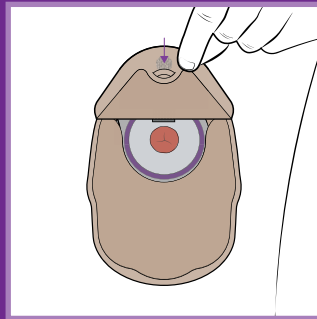
2e. Confirm secure attachment.

3. Using the Window

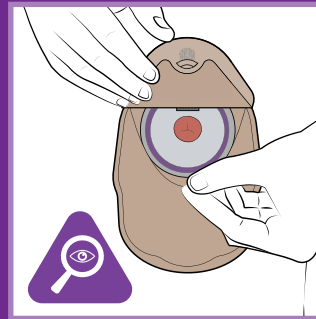
Viewing the stoma and contents of the pouch



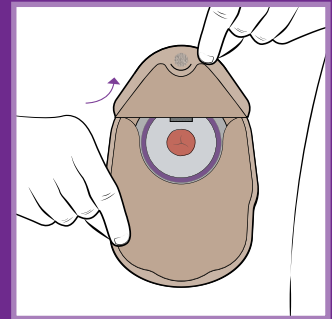
3a. Open the window by pulling the window hood upwards.



3b. Lock the window open by overlapping the hood with the pouch, as shown.



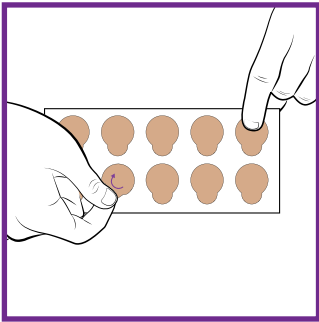
3c. Inspect the stoma and surrounding area. (Optional) Check the contents of pouch by pulling the front fabric away from the pouch.



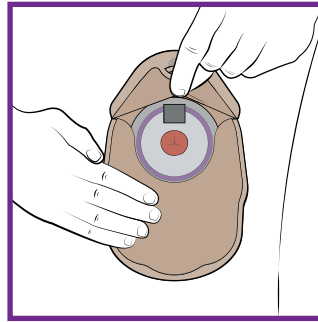
3d. Release the window by unhooking the window hood from the top of the pouch and release your grip.

4. Fitting the Filter Cover

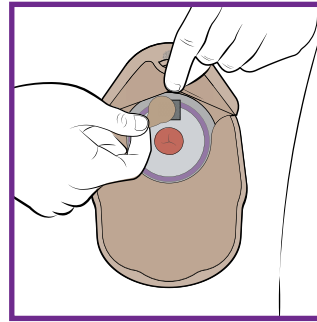
Filter covers are included which can be used when bathing/showering to help prevent 'pancaking' (when the firmer stool stays around the stoma and does not drop into the pouch)



4a. Remove the filter cover from cover sheet.



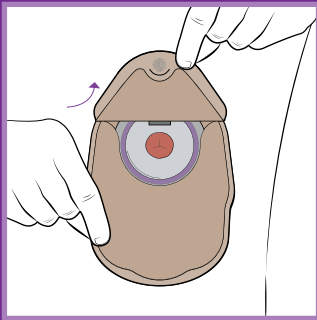
4b. Access the filter location by pulling up the crease of the window.



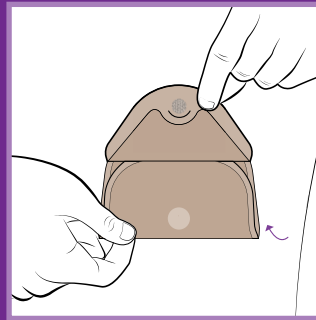
4c. Align the filter cover fully over filter which can be seen as a dark purple square. Remember to remove filter cover once air level has balanced or once finished bathing/showering.

5. Reducing Pouch Size

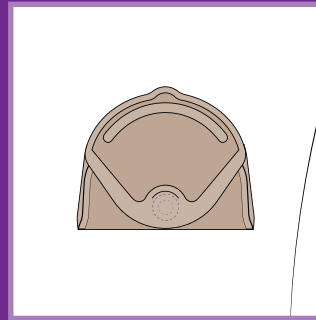
Folding of the pouch can be used for short periods of time when the stoma is inactive



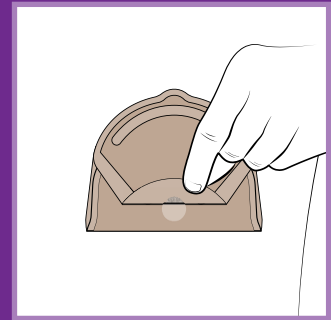
5a. Lift window hood upwards.



5b. Fold the lower section of pouch upwards and under the window hood.

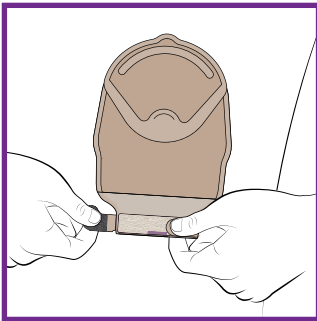


5c. Fold down the window hood, ensuring the Velcro® dots are aligned and secured together.

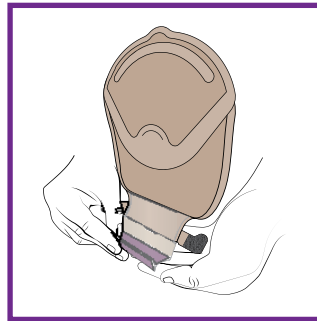


5d. To unfold the pouch, release by peeling the Velcro® dots apart.

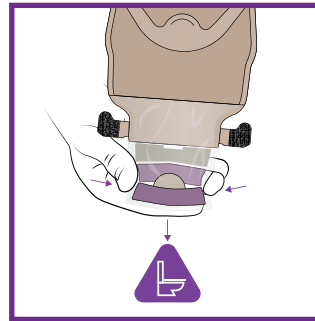
6. Emptying via the Outlet (Drainable Pouch Only)



6a. Peel both Velcro® hook tabs off the Velcro® strip.



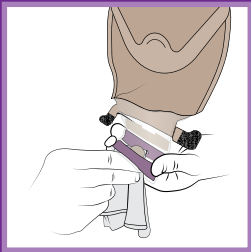
6b. Unroll the tail-end of the outlet.



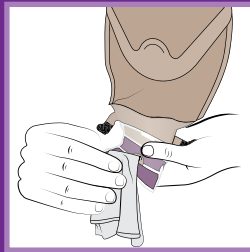
6c. Position the outlet where you want to empty the contents and drain the pouch by squeezing the indents of the outlet.

6. To Close the Outlet (Drainable Pouch Only)

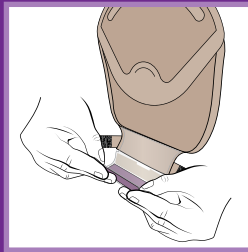
&



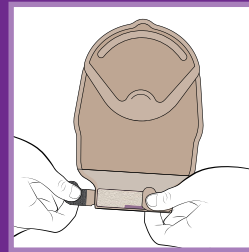
6d. Use a tissue inside the outlet to remove any remaining contents.



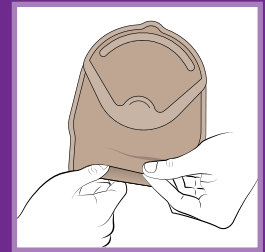
6e. Clean outlet by wiping with tissue or wipe using one sweeping movement away from your body.



6f. Fold the outlet back up.

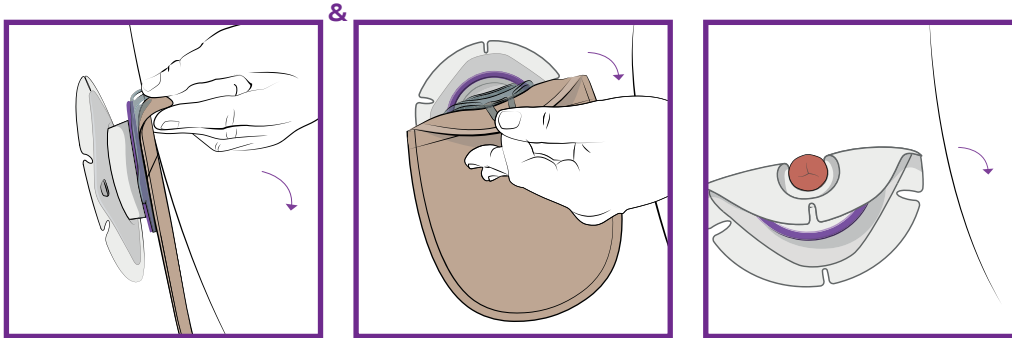


6g. Secure the outlet closed by attaching both Velcro® hook tabs to the Velcro® strip.



6h. Tuck the Velcro® strip up under the split at the bottom of the pouch fabric and attach to the Velcro® dot for added comfort and discretion.

7. Removal



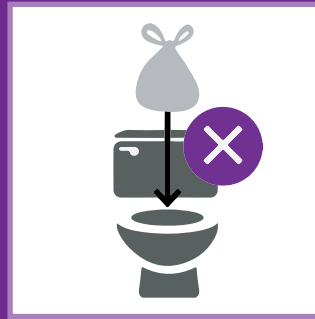
7a. Removal of the pouch: Peel the pouch downwards to remove from the baseplate.

7b. Removal of the baseplate: Gently peel the baseplate downwards and away from the skin. Apply light pressure to your skin with your free hand to aid removal.

8. Disposal



8a. Place used products into waste bag and waste bin.



8b. Do not flush product down the toilet. Dispose of waste products in accordance with local guidelines.

Notes

Warnings and cautions

Consult a healthcare professional if any skin irritation, redness or discomfort around the stoma is experienced. Re-use of a single use product may have potential to harm the user due to the risk of contamination and impairment in product function.

Skin adhesion and wear time may be reduced in conditions of elevated temperature or humidity, or if the baseplate is re-positioned after first application.

In order to achieve correct fitting ensure the stoma template is large enough and the bag is applied as instructed. Incorrect fitting may lead to skin damage e.g. broken skin, rash, irritation and potential infection.

Other information

Store flat in the carton between 10° and 30° Celsius. Do not refrigerate. Keep dry. Do not use if packaging damaged.

Pelican Healthcare Ltd accepts no liability for any injury or other loss that may arise if this product is used in a manner contrary to Pelican Healthcare Ltd current recommendations. Any serious incident encountered, in relation to the use of this device, should be reported to the manufacturer and the competent authority in the country of use. A serious incident is one involving serious deterioration in health or patient death.



Temperature limit



Keep dry



Do not reuse



Consult instructions for use



Medical Device



Do not use if package is damaged



IFU paper recyclable



Manufacturer



Authorized representative in the European Community/ European Union

pelican
HEALTHCARE



Pelican Healthcare Ltd

Greypoint, Cardiff Business Park,
Cardiff, CF14 5WF



Eakin B.V.

Medelse Poort, Biezenwei 23,
4004 MB Tiel, Netherlands

For any additional information:

Call **0800 318 282**

Visit pelicanhealthcare.co.uk

Email contactus@pelicanhealthcare.co.uk

 PelicanHealthcare

 PelicanHealthcareLtd

 PelicanHealth



© 2022 Pelican Healthcare Ltd



PP2PCIFUv5
S7094
Revision Date: 05/2022

